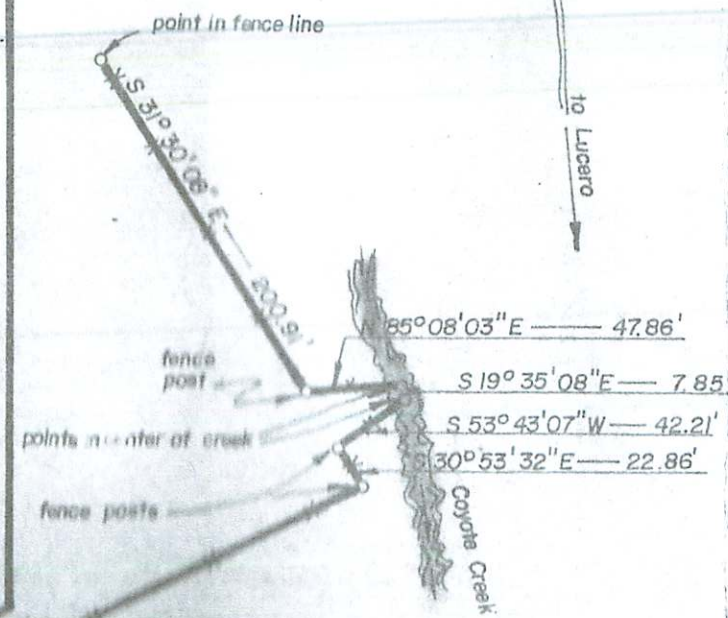


Plat prepared by George Vedeler, N.M.P.E. & L.S. No. 3707  
 entitled plat and partial survey of a portion of the McCauley Ranch  
 Mora County, New Mexico.

- 1 "Map of Turquillo Valley" by W. W. Smith, Dated August, 1915.
- 2 "The Estate of Esequiel Lucero" by Drissel and Associates, P.A. Plat No. 75130 Revised December 1975.
- 3 "Dascomb" by Rio Grande Surveying Service of Taos, Survey No. 78-1307 dated April, just 1978.
- 4 "McCauley Ranch" by Guy Hayden N.M.L.S. 4070, No Date.
- 5 "Plat and Partial Survey of McCauley Ranch" by George Vedeler N.M.P.E. & L.S. 3707, 1976.
- 6 "Plat showing land of Feliberto Valdez" by H.E. Beisman N.M.P.E. & L.S. 136 plat 1971.
- 7 Geographic maps Comanche Peak and Lucero Quadrangles.
- 8 Descriptions and documents were furnished by Alyce P. Burgess and her lawyer.



↑  
 N  
 1" = 1,000'  
 SCALE